

PRO-Tack EVO

CONNECTION to any type of engine and ignition system



Alarm Lights

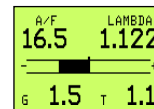
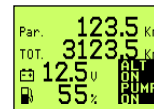
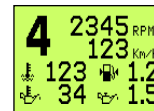
- Oil Pump
- Alternator
- Oil Temperature
- Water Temperature
- Oil Pressure
- Battery
- Fuel Level

3 Programmable Leds

5 Programmable SHIFT LIGHTS

Analogue Tachometer
(Stepper motor driven needle)

GRAPHIC Backlighted LCD Display



Multifunction Electronic Dashboard

The ProTackEVO digital dashboard monitors in real time the engine conditions by means of sensors that acquires the typical parameters, warning the driver in the events of engine malfunction.

An analogue tachometer allows to quickly monitor the engine RPM and 5 LEDs are available to advise for a gear shift.

All the available data (sensor state and alarms) can be viewed on the graphic backlit LCD display and stored in the internal memory at intervals of 0.1 sec. for a maximum time of about 4 hours. They can be downloaded to PC and analyzed with the software included.

The dashboard can be connected to an optical timing system, adding the feature of lap time measurement. Up to 999 lap times can be stored.

Technical specifications

Dimensions :	160 x 85 x 40 mm.
Power Source :	8 - 15 Vdc
Current drawn :	Max 450 mA with 14 Volt supply
Digital Inputs :	Push-Button, LAP, Oil Pump, Alternator, Speed, RPM
Analogue inputs :	Oil Temperature, Oil Pressure, Fuel Pressure Water Temperature, Fuel Level, Battery Voltage
Analogue 0-5 Volt inputs :	2 programmable inputs for optional sensors (Lambda, G, Turbo pressure, Throttle, Gear, EGT)
Display :	LCD Graphic display, 11 Leds
Memory :	4 hours data logger + 999 lap times
PC Connections :	USB / RS232

Available Functions :

Digital Dashboard for monitor in the standard version the following parameters :
RPM, Speed, Odometer, Oil and Fuel Pressure, Oil and Water temperature,
Battery Voltage, Oil Pump and Alternator Status, Fuel Level

and the optional sensors :

Turbo Pressure, Throttle position, Lambda sensor, G sensor, EGT,
Gear, Optical (infra-red) timing system (lap timer sensor + trackside beacon)

Chronometer : saves the last 999 completed laps

Lights : 5 gear shift lights, 2 Alarm lights, 1 direction light, 3 programmable lights

Data Logger : 4 hours of data recording time

PC Connections : USB / Rs232 (PC Software included)

Firmware internet upgradable

A.I.Tech. Products are distributed by TECNO2 S.r.l.
www.aitechinstruments.com www.aitechitaly.it