

# PRO-TACK

## Rally

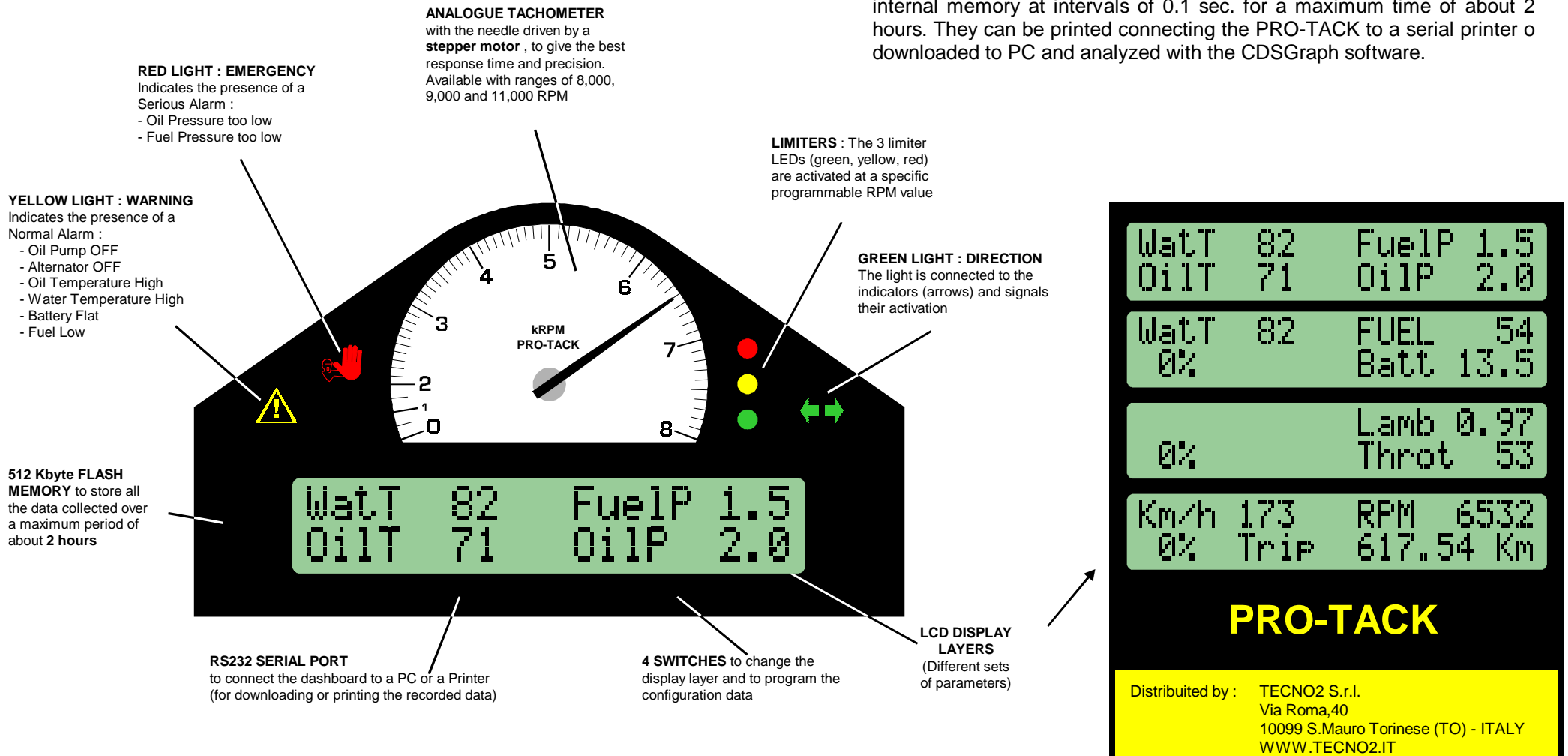
# Multifunction digital dashboard

The Rally version, PRO-TACK digital dashboard monitors in real time the engine conditions by means of sensors that acquires the typical parameters, warning the driver in the events of engine malfunction.

An analogue tachometer allows to quickly monitor the engine RPM and 3 LEDs are available to advise for a gear shift.

The backlighted LCD display indicates the oil pressure and temperature, the water temperature, the fuel pressure, the battery voltage, the throttle position, the lambda value, the fuel level in the tank, the engine RPM, the car speed and distance.

All the available data (sensor state and alarms) can be stored in the internal memory at intervals of 0.1 sec. for a maximum time of about 2 hours. They can be printed connecting the PRO-TACK to a serial printer or downloaded to PC and analyzed with the CDSGraph software.



# PRO-TACK

## Rally

### Items

#### Standard version (base version)

The PRO-TACK Rally version is supplied with the following components:

- 1 Wiring harness** with the connections for the following signals:
  - RPM, Water Temperature, Oil Temperature
  - Oil Pressure, Fuel Pressure, Oil Pump Status
  - Alternator Status, Fuel Tank Level
  - Direction Lights, Dash illumination
  - Power supply - battery, PC or serial printer
- 5 Sensors :**
  - Water temperature
  - Oil temperature
  - Oil pressure
  - Fuel pressure
  - Speed Sensor
- 4 Switches**, for programming and user functions
- 1 PC/Printer Cable**, to connect the PRO-TACK to a PC or a Printer
- 1 Software CDSGraph** installation disk
- 1 Operating Manual**

#### Options

On request, cables for the following signals are available:

- Lambda sensor
- Throttle sensor

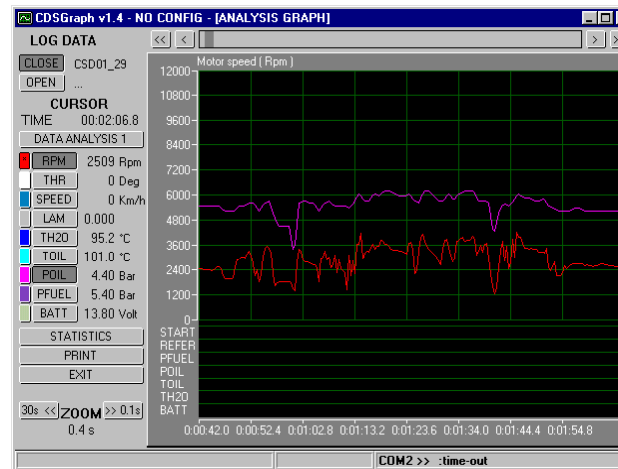
## Data Analysis

The data recorded by the PRO-TACK during the race can be printed connecting the dashboard directly to a serial printer

Time	Throt	RPM	Spd	WatT	OilT	OilP
0:00:01	0	3160	150	67	105	5.4
0:00:02	0	3160	146	67	105	5.4
0:00:03	0	2320	146	67	105	5.4
0:00:04	0	3745	145	67	105	5.4
0:00:05	0	1899	145	67	105	5.3
0:00:06	0	3861	145	67	105	5.3
0:00:07	0	2823	140	67	106	5.3

or displayed on a PC using the CDSGraph software.

## Software



The CDSGraph program for Windows® has been developed in order to give to any, non PC expert, user the possibilities to verify the race parameters and to get the maximum performances from the car. It is possible to easily compare two different recording sessions, visualize the statistical values of the recorded parameters, including peak and mean values.

Beyond the normal dashboard programming, the software allows to draw the sensor's response curve, giving the maximum flexibility to the product.

## Features

- Weight :** 600 g.
- Dimensions :** 183 x 112 x 52 mm
- Power Source :** 9 - 14 Vdc
- Digital Inputs :** 11
- Oil Pump
  - Alternator
  - RPM
  - Car Speed
  - 4 Switches
  - 2 Direction Lights
  - LCD Backlight
- Analog Inputs :** 8
- Battery Voltage
  - Oil Pressure
  - Fuel Pressure
  - Oil Temperature
  - Water Temperature
  - Lambda
  - Fuel Level
  - Throttle position
- Memory :** 512 Kbyte Flash Memory
- Connections :** RS232 Serial Port
- Visualizations :** 40 Characters LCD Display
- 1 Warning Light
  - 1 Emergency Light
  - 1 Direction Light
  - 3 Sequential Shift Light
- Dialscales range:** 0-8,000, 0-9,000, 0-11,000
- Software :** Compatible with Microsoft Windows®

# PRO-TACK